

985 000 €

Buying duplex

6 rooms

Surface : 171 m²

Surface of the living : 60 m²

Year of construction : 2016

Exposition : Sud ouest

View : Montagnes

Hot water : Individuel

Amenities :

Sanitation: All the sewer, Garage area: 44, floor, double glazing, Water distribution: INDIVIDUAL, Water Energy: ELECTRIC BALLOON

4 bedroom

1 terrace

2 bathrooms

2 showers

5 WC

3 garages

3 parkings

Legal information

985 000 €

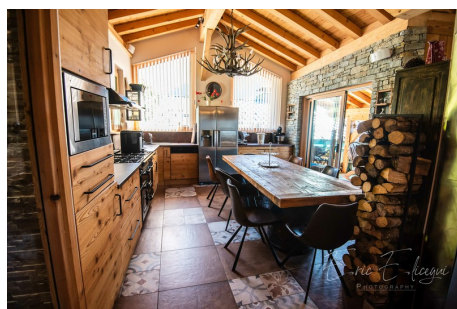
Fees paid by the owner, well condominium(1 lot in the condominium), annual current expenses 144 € (12 € monthly), no current procedure, information on the risks to which this property is exposed is available on georisques.gouv.fr.



Duplex 24 Peisey-Nancroix

Located 600m from Vallandry resort, on the Paradiski ski area (Peisey, Les Arcs, La Plagne), Nexus Immobilier exclusively presents this magnificent duplex apartment of 171m2 Carrez (198 m2 on the ground) in a small condominium with very high low charges (120 euros / year) The construction of this 2016 apartment was designed as a high-end individual chalet and that is exactly how you will feel inside. Outside, stones, old wood and slate blend perfectly for an opulent and mountainous look. On the ground floor, you will find an entrance with a "skiroom" to dry your ski equipment between 2 days, a laundry room, a hall with plenty of storage space. You can accommodate your family or friends in the 3 bedrooms equipped with bathrooms and toilets. Two of them open onto a beautiful covered terrace offering a magnificent view over the valley. On the first floor, a spacious and warm living room of 60m2 with fully equipped kitchen area. The kitchen opens...

Energy class (dpe) : D - Emission of greenhouse gases (ges) : B
Document non contractuel - 11/07/2025



Nexus Immobilier - 39 Chemin du vieux chêne - 38240 Meylan

Tél: 04 76 60 47 50 - contact@nexusimmo.fr - www.nexusimmobilier.fr

RCS 903 885 556 - Document non contractuel - Barème de prix disponible sur notre site internet