

940 000 €

Buying maison

11 rooms

Surface : 248 m²

Surface of the land : 468 m²

Year of construction : 2000

Hot water : Individuel

Amenities :

Ref Cadastre :, Double-vitrage, Distribution eau : INDIVIDUEL, Energie Eau : BALLON ELECTRIQUE

6 bedroom

1 terrace

4 bathrooms

1 shower

6 WC

Legal information

940 000 €

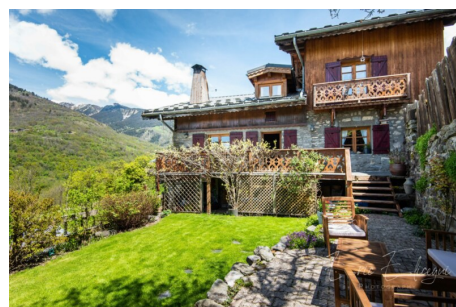
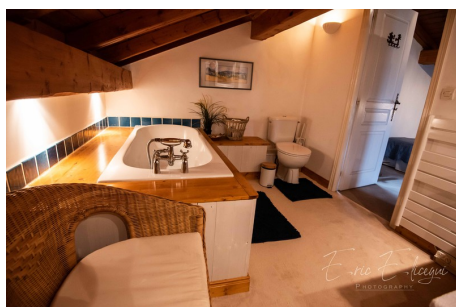
Fees paid by the owner, no current procedure, information on the risks to which this property is exposed is available on georisques.gouv.fr.



Maison Courchevel

Quiet, in a charming hamlet just 5 minutes from Courchevel le Praz, Nexus Immobilier presents this magnificent stone and wood chalet with an area of 248m2 and its beautiful enclosed garden with trees of around 300m2. It's made of : On the ground floor: An entrance hall, a laundry room, a toilet, an equipped kitchen, a semi-open living / dining room with fireplace, a living room that can serve as an extra bedroom, an office. The living room gives access to a large terrace which overlooks the garden. The view from this space is exceptional. 1st: A master bedroom with dressing room, bathroom, WC and independent balcony. 3 beautiful bedrooms including 2 with balcony from which you will have an unobstructed view of the valley. On this level are also a bathroom and a shower room equipped with WC. 2nd: A spacious bedroom with bathroom and WC. This room opens onto a separate balcony overlooking the slopes of Mont Jovet. In the basement: A sauna for 6...

Energy class (dpe) : D - Emission of greenhouse gases (ges) : B
Document non contractuel - 12/06/2025



Nexus Immobilier - 39 Chemin du vieux chêne - 38240 Meylan

Tél: 04 76 60 47 50 - contact@nexusimmo.fr - www.nexusimmobilier.fr

RCS 903 885 556 - Document non contractuel - Barème de prix disponible sur notre site internet